



MARCH 2019

PCAS NEWSLETTER

THE MONTHLY PUBLICATION OF THE
PACIFIC COAST ARCHAEOLOGICAL SOCIETY

www.pcas.org

Volume 58 Number 3

ISSN 0270-6776

MARCH PCAS SPEAKER

Dr. Amy E. Gusick

*Trans-Holocene and Inter-Island
Approaches to Human-Coastal
Interactions: A Case Study from the
Channel Islands of California*

The Channel Islands of California have received much attention from researchers due, in part, to the long occupation history of the islands that spans at least 13,000 years. The northern islands, and the Chumash peoples who inhabited them, have played important roles in our understanding of early coastal adaptations and development of complexity among

(cont. p. 3)

Dr. Amy Gusick.



PCAS MEETINGS CALENDAR

General Meeting

Free and Open To the Public

March 14 - 7:30 pm

Speaker: Dr. Amy E Gusick

Topic: *Trans-Holocene and Inter-Island Approaches to Human-Coastal Interactions: A Case Study from the Channel Islands of California*

Location: IRWD Community Room
15500 Sand Canyon Ave., Irvine

The Irvine Ranch Water District neither supports nor endorses the causes or activities of organizations that use the District's meeting rooms which are made available for public use.

BOARD MEETING

All Members Welcome

March Meeting

Location: For date and location: contact Scott Findlay, president@pcas.org or 714-342-2534.

INSIDE THIS ISSUE

- 2 February Speaker Notes
- 3 *PCAS Quarterly* Request for Papers
- 4 PCAS Curation
- 4 February Board Meeting Summary
- 5 March Field Trip
- 5 Ralphs Community Awards
- 6 Dig This—Exhibits, Lectures, and more
- 7 Speaker Schedule

DINNER WITH THE SPEAKER

Please join this month's speaker, Dr. Amy Gusick, for dinner before the March 14 meeting, 6 pm, Mimi's Café, 4030 Barranca Parkway, Irvine.

This will be your last Newsletter if you haven't renewed your membership! Use the membership form in this Newsletter or renew online at www.pcas.org.

FEBRUARY SPEAKER NOTES

A Pristine Prehistoric Site within a Historical Site at Green Hill (CA-RIV-12608/H)

By Megan Galway

The Green Hill site is located in the BLM’s Dos Palmas Preserve: a 14,000 acre preserve about 13 kilometers northeast of the Salton Sea State Recreation Area. The preserve is at the heart of the 20,000-acre Salt Creek Area of Critical Environmental Concern. Water in the preserve comes from springs resulting from pressure of the San Andreas Fault, which runs through the area. Recent investigations by George Kline and Martín Jespersen have identified an intensive artifact concentration of lithics, ground stone, and pottery. This project is part of an overall study to identify biologically and culturally sensitive areas prior to opening the preserve to the public.



Green Hill site (CA-RIV-12608/H).

The preserve features palm oases, Salt Creek, pupfish ponds, waterfowl, the San Andreas Fault, and old mud volcanoes. Culturally it includes part of the Bradshaw Trail, springs and seeps, a stagecoach stop with associated graves, and the Ranch House Adobe, which is possibly NRHP eligible. The area is below sea level and was, at times, below the high stand shorelines of ancient Lake Cahuilla. There are nearby lithic resources including obsidian from Obsidian Butte to the south. Even further back in time, it is identified as a stop on the “Stoddard” waterfowl trackway, and fossilized waterfowl (goose) foot imprints dating to 2.58 million years ago have been recovered from the area and are currently on display at the Palm Springs BLM office.



February PCAS meeting: from left, Mary Jespersen, Martín Jespersen, PCAS Program Chair Brian Stefensen, and George Kline.

Prehistorically the area was occupied by the Desert Cahuilla people who were dependent on Lake Cahuilla for many of its resources. This lake was fed by the Colorado River and experienced six inflows between AD 850 and about AD 1650. Habitation areas have been identified along various ancient shorelines. After the lake last dried up in about 1710, the Coachella Valley stayed dry until 1905 when a breach in a Colorado River levee created the current Salton Sea.



Dos Palmas Oasis.

The Green Hill site was largely unknown until a recent brush fire burned through the thick vegetation and revealed the artifact concentration. Resources still found at the site include the California fan palm, which provided edible fruits and leaves for basketry, sandals, and roofing thatch. Screwbean and honey mesquite are also found in the area. Chipstone tools included *(Continued on p. 5)*

March Speaker (continued from p. 1)

maritime adapted peoples; however, this is only part of the story. The Tongva (Gabrielino) who lived on the Southern Channel Islands have a similar occupational history, but lived in different environmental and geographic contexts and differ in language and cultural practices. Separated from the mainland and each other by deep ocean trenches and longer distances than between the northern islands, the southern islands required that even the earliest inhabitants have sophisticated watercraft capable of open ocean crossings. Their inhabitants utilized marine and terrestrial environments that were warmer and more arid than those of the northern islands. These varied contexts and long occupational sequence provide different perspectives on coastal adaptations. Their similarities and differences are considered using data from three trans-Holocene archaeological sites from three islands: Eel Point, Little Harbor, and Punta Arena, located on the southern islands of San Clemente and Santa Catalina and the northern island of Santa Cruz, respectively. The presentation will consider the variation in adaptations between these sites and the dynamic relationship between people, islands, and climate change in Mediterranean environments that can be understood through trans-Holocene and inter-island studies.

Dr. Gusick is the Associate Curator for Archaeology at the Natural History Museum Los Angeles County. Prior to this, she was an Assistant Professor at California State University, San Bernardino, and director of a graduate program in Applied Archaeology. She earned a bachelor's degree in 1997 from Seton Hall University and a master's degree in 2007 and Ph.D. in 2012 from the archaeology program of UC Santa Barbara.

Dr. Gusick is an environmental archaeologist with extensive experience in island and coastal

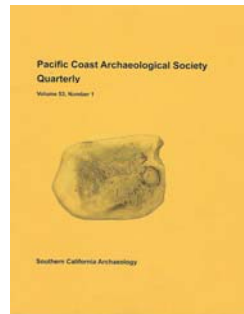


San Nicolas Island.

archaeology. Her research interests focus on human-environmental dynamics, the development of maritime societies, peopling of the Americas, and hunter-gatherer subsistence and settlement. Her current research projects consider early human coastal migration and settlement and the effect of environmental stress on Late Pleistocene and Early Holocene human groups along the Pacific Rim. Dr. Gusick uses both terrestrial and underwater archaeological methods in her research, which has been supported by the National Science Foundation, the National Oceanic and Atmospheric Administration, the National Geographic Society, and the American Philosophical Society.

**PCAS QUARTERLY
REQUEST FOR PAPERS**

The PCAS Publications Committee is inviting the submission of papers for the *PCAS Quarterly*. Although PCAS is especially interested in original contributions that shed further light on the early inhabit-



ants of coastal southern California, it always welcomes reports on the wider Pacific Coast region. A Guide for Authors is available at www.pcas.org/InformationforAuthors.html.

Please direct questions to *PCAS Quarterly* Editor Sherri Gust at publications@pcas.org.

Shop at AmazonSmile
and Amazon will make
a donation to:
**Pacific Coast
Archaeological Society**



Or go to: smile.amazon.com/ch/95-2685178

PCAS CURATION

By Scott Findlay

The PCAS collections have been moved out of the historic Red Car Building to the grounds of Mitchell Elementary School, 3001 W. Harvard St., Santa Ana. Over 1,300 boxes of artifacts will be shelved in two containers with access from a center aisle.

In 2005 members and friends of PCAS moved the PCAS collections to the Red Car Building, Pacific Electric Sub-Station #14, on Lacy Street from the basement of the Pacific Symphony building a few blocks away. With all the help, the basic move was accomplished in one day.

PCAS leased the Red Car Building from Heritage Orange County, which had an agreement that ownership of the building would pass to the Santa Ana Unified School District (SAUSD) after a number of years. The Red Car Building is on the grounds of Garfield Elementary School, and SAUSD needed the space for a parents' room. This February the district generously moved the collections and supplied the containers and site location. The Red Car Building, listed on the National Register of Historic Places, will maintain its historic appearance and be upgraded with a new roof and a great deal of interior work.

Our new curation location is very advantageous because it is very accessible and right next to the Heritage Museum of Orange County. PCAS will be able to hold outreach events in conjunction with the Heritage Museum and have use of its facilities.

PCAS members will continue to organize and re-bag collections. The vast majority of the collections are from Orange County sites, many of which have not been studied or reported on. Our goal is to make these collections available for study.



Containers holding PCAS collections.

FEBRUARY BOARD MEETING SUMMARY

By Megan Galway

President Scott Findlay called the February 9, 2019 meeting to order at 1:05 pm at the Red Car Building, Lacy Street, Santa Ana. Directors present: **Bob Brace, Steve Dwyer, Irene Foster, Megan Galway, Hank Koerper, Steve O'Neil, and Brian Steffensen.** PCAS member present: **Rene Brace.**

The January 2019 minutes were approved. The 2018 year-end Treasurer's report was previously circulated to Board members and approved for publication in the February *PCAS Newsletter*. The February Treasurer's report and expenditures were approved.

President **Scott Findlay** again expressed the importance of Board members and committee chairs to find back-ups/assistants for their positions.

The February Board meeting was called a week earlier than scheduled because of the need to discuss the moving of PCAS collections in the next few days. The Santa Ana Unified School District (SAUSD) has purchased two shipping containers and have located them on the grounds of Mitchell Elementary School, next to the Heritage Museum of Orange County. SAUSD staff will begin the move of PCAS collections to the containers in the near future. Site records and other important documents will not be placed in the containers, but will be stored at a storage unit or members' homes. Board members were asked to be available next week to assist with moving records. **Scott Findlay** will attempt to sell items used for grounds maintenance at the Red Car Building.

A new location will be needed for monthly Board meetings. Board members were asked to investigate and recommend any locations available on weekends or after 7 pm on weekdays.

The meeting was adjourned at 2:30 pm.



www.facebook.com/pacificcoastarchaeologicalsoc

MARCH FIELD TRIP

By Steve Dwyer

When: March 8–10, 2019

Where: Lower Colorado Desert

PCAS members plan to dry camp and visit nearby rock art and habitation sites. Members will need to be prepared to hike over rough terrain. Be aware that all participants are required to sign a code of ethics and waiver of liability. For information or to sign up for this field trip, contact Scott Findlay (714-342-2534), Stephen Dwyer (714-969-1911), or fieldtrips@pcas.org. If you have signed up for a field trip and are unable to



participate, notify the contacts above.

March is the perfect time to view desert wildflowers, and a super bloom is expected this year. Winter rains may extend the blooming season.

Wildflowers, Anza-Borrego Desert State Park.

SIGN UP FOR RALPHS COMMUNITY REWARDS

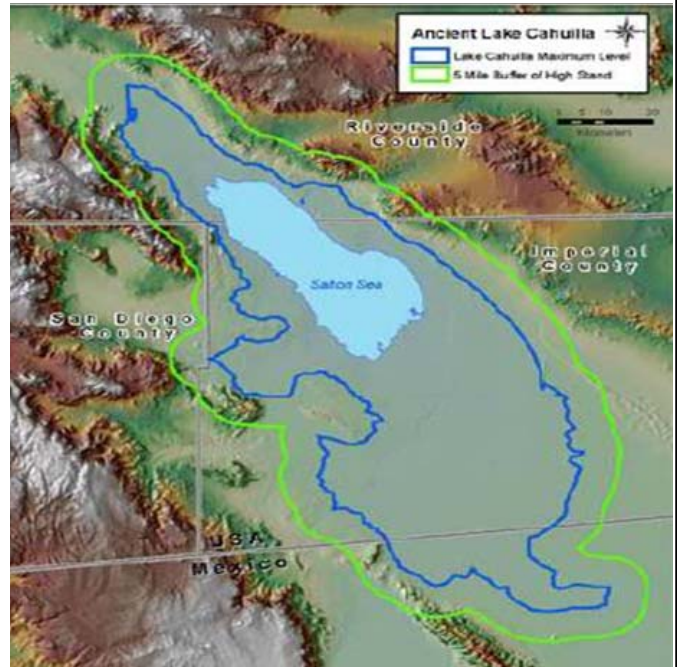
PCAS thanks Ralphs and all our participants for this opportunity to earn a donation of at least 1 percent of your Ralphs purchases. Go to www.ralphs.com and create an account or sign in (email and password) to your account.

1. Click on “My Account” at top of screen.
2. Link your card to PCAS by clicking on “Community Rewards” on the left menu. Search for “Pacific Coast Archaeological Society.”
3. Or call 800-443-4438 for assistance.

Thank you for supporting PCAS!

February Speaker Notes *(continued from p. 2)*

Cottonwood Triangular and Desert Side-notched points made from jasper and obsidian. Abrasion tools of pumice (which floats and is found on the lakeshore), including an arrowshaft abrader; a large (possibly two-handed) mano; and many pottery sherds were found.



Blue line—Lake Cahuilla high stand. Green line—five mile border from Lake Cahuilla’s maximum level.

The historic portion of the preserve includes the site of the old stage stop and an associated small cemetery. Headstones on a large and small grave identify the deceased as “Mother White and Baby White.” The third grave is identified as that of Herman Ehrenberg, who was born in Germany in 1816. He fought against Mexico in the Texas Revolution and survived the Goliad Massacre. He was traveling by stage with a large quantity of gold bullion and stopped overnight in October 1866. Next morning he was found murdered and his gold missing. The innkeeper blamed local Natives, but the murder was never solved. The town of Ehrenberg on I-10 at the Colorado River is named for him. The Ranch House Adobe was owned at one time by Hollywood advertising agency owner Raymond Morgan, who entertained such celebrities as Barry Atwater and James Cagney. During World War II it was used by General George Patton as a desert training site.

The preserve has a rich natural and cultural history with great research potential.

DIG THIS ...



Exhibits

Postcards from Mecca exhibits the photographs of Susie Keef Smith and Lula Mae Graves (1916-1936), including Corn Springs petroglyphs. La Quinta Museum, 77885 Avendida Montezuma, La Quinta, through May 15. Free. Information: www.playinlaquinta.com/arts-culture/la-quinta-museum.

The Cerutti Mastodon Discovery features artifacts and fossils discovered by museum paleontologists that suggest very early humans in North America. San Diego Natural History Museum, through December 31. Fee varies. Information: www.sdnhm.org.

Lectures

New Approaches to the Old Kingdom: A Segmented State?, by Dr. Jessica Tomkins (CSU San Bernardino). An ARCE lecture, Bowers Museum, March 2, 1:30–3:30 pm. Fee: \$12; Bowers and ARCE members free. Tickets and information: www.bowers.org or 714-567-3677.

What Does a Bead Cost? Experimental Archaeology and Shell Beads, by Brian Barbier (Ph.D. candidate, UCSB), a lecture of the Santa Barbara County Archaeological Society, Santa Barbara Museum of Natural History, March 4, 7:30 pm. Information: 805-682-4711, Ext 141.

Bighorn Sheep in the Coachella Valley, by Marcus Nelson (Bighorn Institute). A Coachella Valley Archaeological Society presentation, Portola Community Center, 45-480 Portola Ave, Palm Desert, March 8, 6:30 pm. Free. Information: www.cvarch.org.

The Treaty of Temecula and the American Invasion in Southern California, by Sean Milanovich (Ph.D. candidate, UC Riverside). A Second Friday Old Schoolhouse Lecture, 6760 National Park Dr, Twentynine Palms, March 8, 7 pm. Fee: \$5. Information: www.29palmshistorical.com/DesertInstituteLectures.php.

Tales from the Guadaluca, by Dr. Colleen Delaney, will present the history of the Mexican land grant in

Lectures (continued)

present-day Ventura County. A lecture of the Ventura County Archaeological Society, Stagecoach Inn Museum, Newbury Park, March 12, 7 pm. Free. Information: www.venturaarchaeology.org.

Bighorn Sheep, a lecture of the Colorado Desert Archaeological Society. Visitor Center Discovery Lab, Anza-Borrego Desert State Park, March 15, 11 am. Free. Information: www.parks.ca.gov/pages/638/files/ABDSPInterpScheduleMarch2019.pdf.

Kings, Copper, and Clay: Reconstructing the Copper Trade of the Biblical Kingdoms through Ceramic Analysis, by Matt Howland (Ph.D. candidate, UC San Diego), a lecture of the AIA, Orange County Chapter. DeNault Auditorium in Grimm Hall, Concordia University, 530 Concordia West, Irvine, March 17, 2 pm. Fee: \$5; members free. Information: www.aia-oc.org.

Chasing Centuries: The Search for Ancient Agave Cultivars across the Desert Southwest, by Ron Parker. Lecture of the Anza-Borrego Desert Natural History Association, March 22, 6:30 pm. Fee: \$12, members \$10. Information and registration: 760-767-3098 or www.abdnha.org.

Classes, Meetings, and Events

Malki Museum's Annual Agave Harvest, led by Daniel McCarthy, will be held on two days—April 6 and 7. Meet at Cahuilla Tewanet Overlook on the Palms to Pines Hwy 74. Fee: \$10 donation. **The Agave Roast** will be held at the Malki Museum, April 13. Food tasting will begin at noon. Fee: Free admission, \$10 for food plates. Reservations recommended for both events: 951-849-7289. Information: www.malkimuseum.org.

Editor's Note: Please confirm time and place of listing prior to the event. Submit items for Dig This to newsletter@pcas.org.

PCAS CODE OF ETHICS

The Pacific Coast Archaeological Society (PCAS) is a nonprofit group of professional and avocational people dedicated to proper management of our cultural resources, public education, and the protection and preservation of archaeological materials and collections.

The following principles have been adopted by the PCAS:

1. Professional methods and forms will be used on all archaeological field surveys, excavations, and laboratory sessions.
2. A complete record of field and laboratory work will be filed with the PCAS Curator and stored at a facility approved by the Society's Board of Directors.
3. No archaeological materials will be removed without proper permits, landowner permission, and a field research design.
4. Unless otherwise legally stipulated before activity commences, all materials collected will be deposited for further research with the Curator at a facility approved by the Society's Board of Directors.
5. All generated reports will be the property of the Society and distributed as deemed appropriate.
6. All Society field activities will be performed only under the direction of a qualified field archaeologist (Principal Investigator) and the supervision of field or site directors.
7. The above principles will be observed on both Society approved projects and projects performed under the direction of an authorized institution or organization.
8. The Society and its members will strive to educate the public of the importance and proper management of our non-renewable cultural resources and to discourage the collection and commercial exploitation of archaeological materials.
9. PCAS members shall not benefit from the acquisition, purchase, sale, or trade of archaeological artifacts, materials, or specimens.
10. All members shall adhere to City, County, State, and Federal antiquities laws.



Santa Cruz Island.

Come to the March 14 lecture!

PCAS SPEAKER CALENDAR

April 11, 2019

John Bretney

Rock Art of the Rodman Mountains

May 9, 2019

Ivan Strudwick

Anaheim's Chinatown

June 13, 2019

Barbara Tejada

TBA

2019 PCAS BOARD MEMBERS AND COMMITTEE CONTACTS

<u>Office</u>	<u>Name</u>	<u>Email</u>	<u>Phone</u>
*President	Scott Findlay	president@pcas.org	714-342-2534
*Vice-President	Steve O'Neil	vicepresident@pcas.org	949-677-2391
*Secretary	Megan Galway	secretary@pcas.org	714-539-6354
*Treasurer	Bob Brace	treasurer@pcas.org	714-544-6282
*Field Trips Co-Chair	Stephen Dwyer	fieldtrips@pcas.org	714-969-1911
*Historian/Librarian	Jane Gothold	historian-librarian@pcas.org	562-947-6506
*Programs Chair	Brian Steffensen	programs@pcas.org	714-348-9179
*Voting Member	Irene Foster	ifoster@pcas.org	714-245-0264
*Voting Member	Hank Koerper	hkoerper@pcas.org	714-633-9287
Archivist	Gail Cochlin	archivist@pcas.org	714-745-0815
Curator	Mark Roeder	curator@pcas.org	714-299-4150
Donation-Awards Coordinator	Joe Hodulik	donation-awards@pcas.org	949-300-1864
Historian/Librarian	Jane Gothold	historian-librarian@pcas.org	562-947-6506
Membership	Megan Galway	membership@pcas.org	714-539-6354
Native American Liaison	Steve O'Neil	nativeamericanliaison@pcas.org	949-677-2391
Newsletter Editor	Sherri Gust	newsletter@pcas.org	714-245-0264
Publicist	Joe Hodulik	publicity@pcas.org	949-300-1864
Quarterly Editor	Sherri Gust	publications@pcas.org	714-245-0264
Refreshments	Gail Cochlin	refreshments@pcas.org	714-745-0815
Scholarship	Megan Galway	scholarship@pcas.org	714-539-6354
Website	Rene Brace	info@pcas.org	714-544-6282

*PCAS Board Member

PACIFIC COAST ARCHAEOLOGICAL SOCIETY

2019 Calendar Year Membership and Subscription Form

Name(s): _____

Address: _____

City: _____ State: _____ Zip Code _____

Phone: _____ Email: _____

Newsletters will be sent by email unless a mailed copy is requested.

I have read and agree to abide by the PCAS Code of Ethics _____

Signature

Membership (Includes Quarterly/Newsletter)

- Active Member – \$45
- Family Membership – \$50
- Supporting Member* – \$55
- Donor Member* – \$75
- Lifetime Member* – \$1000

* May be individual or family membership

Subscription Only

- Quarterly – \$40
- Newsletter – \$20

Scholarship Fund

- Donation \$ _____

Return form with payment to:

**PCAS Membership
PO Box 10926
Costa Mesa, CA 92627-0926**

www.pcas.org