



AUGUST/SEPTEMBER 2011

PCAS NEWSLETTER

THE MONTHLY PUBLICATION OF THE
PACIFIC COAST ARCHAEOLOGICAL SOCIETY

www.pcas.org

Volume 50 Number 8&9

ISSN 0270-6776

SEPTEMBER PCAS SPEAKER

Elizabeth Sutton

**Perforated Stones from the
Santa Barbara Channel Region**

Archaeologists have long made assumptions as to the use and meaning of the variety of perforated stones found in the Santa Barbara Channel Region. These assumptions focus around where the stones are most likely to be found, who was using the stones, and the purpose for which the stones were being employed. This systematic study of 525 whole or fragmented perforated stones from museum collections was undertaken in order to evaluate the validity of the assumptions being made. During the course of this study, thirteen perforated stone types were identified based on stylistic attributes, and use-wear and metric data were analyzed in an attempt to discern the function of each type of perforated stone. Burial records from Chumash internments on Santa Cruz Island were then consulted to determine which segments of the population may have used the stones and whether this demographic may have changed over time.

Elizabeth Sutton received her BA from UCLA and MA from UCSB. Currently, she is a Ph.D. candidate at UCSB. Her specialty is California archaeology and the focus of her dissertation research is Contact Period household archaeology on Santa Cruz Island. Elizabeth strongly advocates for museum collections research and has worked in a curatorial capacity for the Santa Barbara Museum of Natural History, UCSB Repository for Archaeological and Ethnographic Collections, and the National Park Service, and she is currently the Associate Curator of Archaeology at the John Cooper Center in Santa Ana.

DINNER WITH THE SPEAKER

Please join this month's speaker, Elizabeth Sutton, and PCAS members for dinner before the September 8th General Meeting. We will meet at 6 pm at Mimi's Café, 4030 Barranca Parkway, Irvine.

PCAS MEETINGS CALENDAR

GENERAL MEETING

Free and Open to the Public

September 8 - 7:30 pm

Speaker: Elizabeth Sutton

Topic: *Perforated Stones from the
Santa Barbara Channel Region*

Location: Irvine Ranch Water District
15600 Sand Canyon Ave., Irvine

The Irvine Ranch Water District neither supports nor endorses the causes or activities of organizations that use the District's meeting rooms which are made available for public use.

BOARD MEETING

All Members Welcome

September 15 - 7:00 pm

Location: Old Orange County Courthouse
PCAS Library, Ground Floor
211 W. Santa Ana Blvd., Santa Ana

INSIDE THIS ISSUE

- 2 June Speaker Notes
- 3 Scholarship Column
- 3 September Curation Workday
- 3 June Board Meeting Summary
- 4 Field Trips
- 4 Wind Farm - a threat to cultural sites
- 5 PCAS Board Nominations
- 6 Dig This - Exhibits, lectures, and more
- 7 PCAS Picnic
- 7 Speaker Schedule

**This is the combined
August/September Newsletter.**

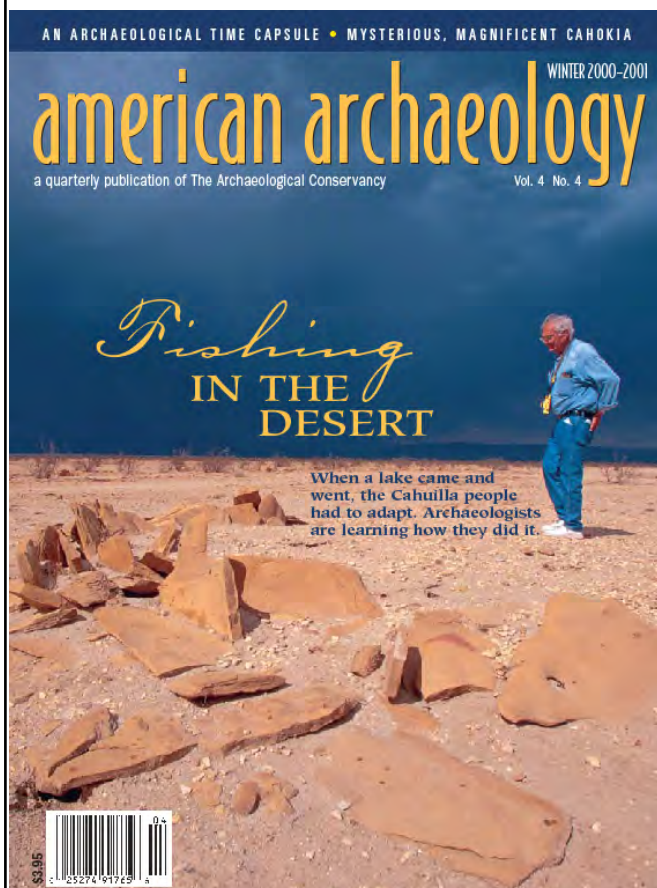
JUNE SPEAKER NOTES

A Look at the Life and Times of Jay Crawford von Werlhof (1923-2009)

Submitted by Megan Galway

Our June speaker, Russell L. Kaldenberg, presented an interesting and detailed look at the life and times of California anthropologist Jay Crawford von Werlhof. Jay, who passed away in 2009, was well known to many of our members for his conference presentations, field trips, and publications in the PCAS Quarterly. It was interesting to hear of his early life and developing interest in anthropology, ethnography, and archaeology.

Jay was an inveterate diarist and left many volumes of field notes and daily observations. Kaldenberg noted that a number of these volumes were unfortunately lost, but enough remain that in combination with oral histories from the family he has been able to document a detailed account of a fascinating life.



Jay von Werlhof on the cover of *American Archaeology*, Winter 2000-2001.



Program Chair Joe Hodulik with June speaker Russell Kaldenberg.

Jay was born on September 13, 1923 (or maybe 1921), in Red Bluff, California. His father, Victor Harry von Werlhof (a WWI test pilot, lay preacher, and newspaper editor) died in 1923, and Jay’s mother, Emily, raised Jay and his three brothers by working as a seamstress. His grandmother was married to Tom Cleghorn, a Yahi Indian.

Jay was drafted in 1943 and served in Europe in intelligence and translation—often behind enemy lines. During this time he also began to discover his German heritage. On his return home he worked at J. C. Penny and enrolled in the history department at UC Berkeley. He counted among his mentors, Robert Heiser, Herbert Bolton, Kenneth Stamp, and Ron Olsen. During this time he also met A. L. Kroeber. While at UC Berkeley, he worked on a number of site surveys, wrote site reports, and drew archaeological site maps for the UC Archaeological Survey.

(continued on p. 5)



Jay von Werlhof (right) receiving award with Paul Ezell and Russell Kaldenberg (from left).

SCHOLARSHIP COLUMN

Gloria Bogdan Memorial Scholarship

PCAS is pleased to award the 2011 Gloria Bogdan Memorial Scholarship to **Vanessa Sargent** of Camarillo. Vanessa is a student at CSU Channel Islands, a campus that has a strong archaeology program but doesn't yet offer a major in anthropology. Her interest in other cultures began when she traveled to Scotland as an exchange student in her junior year of high school and had the opportunity to visit other European countries. She has worked with Dr. Delaney-Rivera to gain experience in both lab and field work, and she is currently a board member of the Ventura County Archaeological Society. The PCAS board is pleased to acknowledge Vanessa as an example of the type of student we hope to assist with our scholarship program.

Myrtle Soderberg Memorial Scholarship

Unfortunately, due to a lack of other qualified applicants, we have not yet awarded our annual Myrtle Soderberg Memorial Scholarship. **We have agreed to extend the application period for this award (for this year only) to October 14th and to accept applications from all upper division students.** In today's economic environment we know there must be students who could benefit from a \$750 award. Notices will be sent to our email list of California professors and instructors next month, and we hope our members will help us spread the word to any students who may qualify for this award. Application forms and qualifications can be found at www.pcas.org/scholarship.

SEPTEMBER CURATION WORKDAY

When: September 10, 2011

Time: 1 pm

Where: Red Car Building

We have completed the inventory of the PCAS CA-ORA-236 (Coyote Canyon Cave) collection and are now working on the CA-ORA-190 (Buck Gully) material. ORA-190 was excavated by PCAS in the 1960s. Everyone is welcome. No experience necessary! Please contact Mark Roeder (714-241-8880, curator@pcas.org) or Rene Brace (714-544-6282, info@pcas.org) for directions and to let us know you will be coming.

JUNE BOARD MEETING SUMMARY

Submitted by Megan Galway

President Scott Findlay called the meeting to order at 7:06 pm at the Old County Courthouse, Santa Ana, California. Board members present: **Bob Brace, Scott Findlay, Megan Galway, Joe Hodulik, Hank Koerper, Steve O'Neil, and Kathleen Shada.** Members present: **Rene Brace and Gail Cochlin.**

The May 2011 minutes were approved, and the treasurer's report and expenditures were approved.

Old Business

President Findlay is continuing work on our emergency plan and will prepare a list of medical and fire facilities in close proximity to each of our venues. This information will be available at all events.

New Business

The Board appointed **Hank Koerper, Steve O'Neil, and Rene Brace** to the 2011 nominating committee. They will recommend three nominees for our annual election in November. Three new board members will be elected to three-year terms to replace retiring members—**Megan Galway, Steve O'Neil, and Ivan Strudwick.** The Board discussed the need for a new computer for the library. We would like to be able to scan many of our documents for digital storage, and our current computer is just not up to the task. **Rene Brace** will investigate buying a reconditioned one from Tech Soup. The Board approved the presentation of the Gloria Bogdan Memorial Scholarship to **Vanessa Sargent** from CSU Channel Islands. Due to lack of qualified applicants, the Board still has the Myrtle Soderberg Memorial Scholarship available and agreed to extend this year's application window until October 14th and to expand student eligibility to all upper division students. This information will be emailed to college professors and instructors at the end of August. The Board acknowledged book donations from **Paul Chace, Bernice Thompson, and Kris Dendinger** and thanked them for their generosity and support.

Committee Reports

Volunteers will continue work on ORA-190 (Buck Gully) on July 16th. **Joe Hodulik's** donation/award table generated \$146 in June! **Megan Galway** emailed a brief survey to six scholarship recipients from 2005 thru 2009 and received two responses. Both respondents have graduated and are working in archaeology. Both noted they felt the scholarship was beneficial. PCAS Quarterly Volume 45, Numbers 1&2, is almost ready and will be published during the summer.

The meeting was adjourned at 8:00 pm.

JUNE FIELD TRIP

PCAS members and guests enjoyed a June field trip led by **Steve O'Neil** to rock art sites near Ortega Highway (see photos below) and to historic San Juan Capistrano. Members and guests attending: **Bob and Rene Brace, Phil Brigandi, Gail Cochlin, Scott Findlay, Steve Frazier, Megan Galway, Kelly Hickler, Steve O'Neil, John and Crystal Nordenstam, and Kathleen Shada.**



Red saturation was increased in this photo.



Access to a site required crossing a running stream.



Steve O'Neil (left) standing near mortar with Scott Findlay.

FALL FIELD TRIPS

September Field Trip

When: September 24-25, 2011

What: Pinyon Pine Protection Project

San Bernardino National Forest Tribal Relations Program Manager **Daniel McCarthy** will again be conducting the Parry Pinyon Pine Protection Project this fall. The project will take place over several weekends, and several PCAS members plan to attend the weekend of September 24-25.

Pinyon pine trees are found in the Santa Rosa and San Jacinto mountains. There are two species of pinyon: *Pinus monophylla* and *Pinus quadrifolia* (Parry Pine). Both species are culturally important to the Cahuilla Indians and other Southern California tribes. While the San Bernardino National Forest fuel reduction program continues across the forest to remove dead trees, the Pinyon Protection Project's efforts will focus on removing the brush around the Parry Pine trees. The concern is over the amount of vegetation build-up (undergrowth) near these trees. By clearing away the vegetation and limbing lower branches, a wild fire will burn around or under the trees and not consume them.

October Field Trip

When: October 22

Where: Kanab area, Utah

We plan to camp on private property and visit nearby sites. The length of the trip will be at the option of individual participants.

For information about either field trip, please contact **Scott Findlay** at fieldtrips@pcas.org or 714-342-2534.

PROPOSED WIND FARM— A THREAT TO CULTURAL SITES

A proposal to place a wind farm on two buttes in the Pipes Canyon/Pioneertown area north of Yucca Valley will impact Native American habitation and rock art sites. The project on BLM land is in the testing stage and will need a complete environmental review to go forward. *The Press-Enterprise* published an excellent article on the proposal. Additionally, those opposed to the wind farm project have a website at www.saveourdesert.com.

PCAS BOARD NOMINATIONS

The Nominations Committee—composed of **Rene Brace, Hank Koerper, and Steve O’Neil**—requests that members interested in serving on the PCAS Board of Directors contact a committee member. The committee is seeking candidates willing to take an active role as a member of a working Board of Directors and who will attend Board meetings and General meetings. A biography, not to exceed 125 words, must be submitted to one of the committee members listed below no later than the September General Meeting, September 8, 2011. The submitted biographies will appear in the October PCAS Newsletter.

At the November General Meeting, PCAS members will elect three Board Members who will serve three-year terms. At this election meeting, nominations may be made from the floor by any member, with the prior consent of the nominee.

Please contact: Rene Brace (info@pcas.org), Hank Koerper (publications@pcas.org), or Steve O’Neil (vicepresident@pcas.org).

Speaker Notes *(continued from p. 2)*

He received his MA in history in 1952 and began ethnographic work with the Tachi Yokuts. In 1957 he wrote a noted series of articles on the Tachi for the *Coalinga Record*.

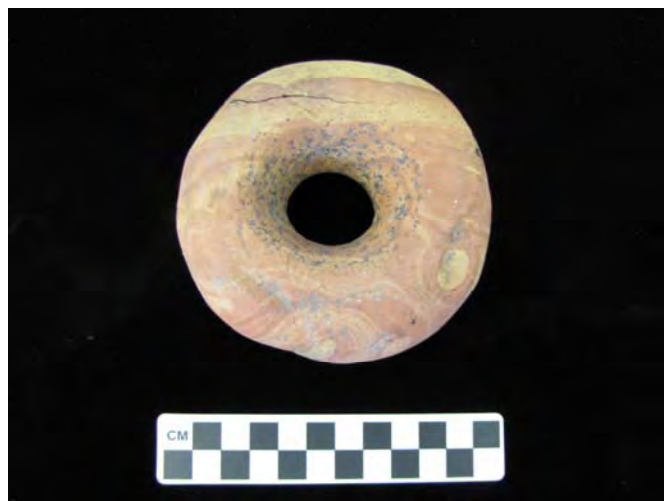
From 1954 to 1959 he studied at the San Francisco School of Fine Arts and became an accomplished artist. From 1959 to 1961 he studied rock art sites in California and Nevada, recording trails, spirit breaks, intaglios, geoglyphs, pictographs, and petroglyphs throughout the Colorado Desert.

During the late 1960s and early 1970s Jay taught at Chico State, Cal Poly San Luis Obispo and Cuesta Community College. In 1973 with his fourth wife, Sherilee, he settled in Imperial County and taught at San Diego State University, Imperial Campus, and Imperial Valley College. He was instrumental in the formation of the Imperial Valley Archaeological Survey and the California Historic Resource Information Center for Imperial County.

When Jay arrived in Imperial County, there were only 109 recorded archaeological sites. He proceeded to record over 6,000 sites. He also worked closely with fellow researchers in Baja California. His many awards through the years acknowledged Jay von Werlhof’s work as a major source of local archaeological knowledge.

PERFORATED STONES

Elizabeth Sutton will discuss perforated stones from the Santa Barbara Channel area at the September 8th meeting. Below are photos of perforated stones from the collections of the Santa Barbara Museum of Natural History.



DIG THIS...



Exhibits

The Natural History Museum of Los Angeles County's new Dinosaur Hall opened in July. Fee: included with museum admission. Timed tickets are available at www.nhm.org.

Launching a Dream: Reviving Tongva Maritime Traditions presents photographs of the Chumash *tomol* by Frank Magallanes and Althea Edwards showing construction, launching, and communal celebrations. Fowler Museum, UCLA, through September 18. Free (fee for parking). Information: 310-825-4361 or www.fowler.ucla.edu.

Warriors, Tombs, and Temples: China's Enduring Legacy, assembled in cooperation with seven leading Chinese institutions. Bowers Museum, October 1-March 4. Fee. Timed tickets available online. Information: 714-567-3600 or www.bowers.org.

Lectures

Harry Quinn will be the guest speaker at the Pot Luck meeting of the Coachella Valley Archaeological Society, Cathedral City Community Center, 37-171 West Buddy Rogers, September 6, 6:30 pm. Free. Information: www.cvarch.org.

The Native American Landscape of Orange County, by Stephen O'Neil, an Orange County Natural History Lecture. Back Bay Science Center, 600 Shellmaker Rd, Newport Beach, September 7, 7-9 pm (gates open at 6:30 pm). Reservations recommended: 949-644-3038 or tidepools@newportbeachca.gov.

Historical Fiction of Ancient Egypt, by Dr. Colleen Manassa (Yale University), an ARCE lecture. Bowers Museum, September 24, 1:30 pm. Free. Information: <http://arceoc.org>; www.bowers.org or 714-567-3677.

Death, Dying, and Mourning in American History, Dr. Seth Mallios (San Diego State University), a part of the Mummy Lecture Series. San Diego Museum of Man, October 1, 11 am-noon. Free with museum admission. Information: www.museumofman.org or 619-239-2001.

Classes, Meetings, and Events

Project Archaeology will present the Center's award winning education program with hands-on activities. San Diego Archaeological Center, September 10, 10 am-2 pm. Fee: \$5 (members free; \$15 maximum for families). Information: www.sandiegoarchaeology.org or 760-291-0370.

Native American Basket Weaving, by Lorene Siquoc, October 1-2, fee: \$100-\$110; ***Archaeology of Joshua Tree National Park***, by Joan Schneider and Claude Warren, October 15-16, fee: \$100-\$110 or credit \$150-\$160; ***Edible Plants of the Desert***, by William Pink, October 22-23, fee: \$100-\$110; ***Historic Artifacts of the Mojave Desert***, by John Hale, November 6, Fee: \$50-\$60. ***Native American Style Pottery***, by Tony Soares, November 12 and 20, fee: \$100-\$110 plus \$50 material fee. Classes of the Desert Institute at Joshua Tree National Park. Information and registration: 760-367-5535 or <http://desertinstitute.homestead.com>.

SCA Data Sharing Meetings. The southern meeting will be held October 22 at the San Diego Archaeological Center. The northern meeting will be held September 30-October 1 at Yosemite National Park. Information: www.scahome.org.

Websites

The San Diego County Archaeological Society website, www.sandiegoarchaeologicalsociety.com, has information about its free monthly lectures normally held on the 4th Tuesday of the month, 7:30 pm, at the Los Peñasquitos Ranch Adobe.

Visit www.pcas.org for all the latest news.

Editor's Note: Please confirm time and place of listing prior to the event. Submit items for Dig This to newsletter@pcas.org.

PCAS CODE OF ETHICS

The Pacific Coast Archaeological Society (PCAS) is a non-profit group of professional and avocational people dedicated to proper management of our cultural resources, public education, and the protection and preservation of archaeological materials and collections.

The following principles have been adopted by the PCAS:

1. Professional methods and forms will be used on all archaeological field surveys, excavations, and laboratory sessions.
2. A complete record of field and laboratory work will be filed with the PCAS Curator and stored at a facility approved by the Society's Board of Directors.
3. No archaeological materials will be removed without proper permits, landowner permission, and a field research design.
4. Unless otherwise legally stipulated before activity commences, all materials collected will be deposited for further research with the Curator at a facility approved by the Society's Board of Directors.
5. All generated reports will be the property of the Society and distributed as deemed appropriate.
6. All Society field activities will be performed only under the direction of a qualified field archaeologist (Principal Investigator) and the supervision of field or site directors.
7. The above principles will be observed on both Society approved projects and projects performed under the direction of an authorized institution or organization.
8. The Society and its members will strive to educate the public of the importance and proper management of our non-renewable cultural resources and to discourage the collection and commercial exploitation of archaeological materials.
9. PCAS members shall not benefit from the acquisition, purchase, sale, or trade of archaeological artifacts, materials, or specimens.
10. All members shall adhere to City, County, State, and Federal antiquities laws.

PCAS Annual Picnic



Irvine Regional Park was again a beautiful setting for the PCAS Annual Picnic on July 14th. Thanks to Bob Brace for supplying the hamburgers and to all who brought a dish to share.

PCAS SPEAKER CALENDAR

October 13, 2011

Dr. René L. Vellanoweth

November 10, 2011

Dr. Donn Grenda

December 8, 2011 (Holiday Dinner)

Dr. Robert M. Yohe II

January 12, 2012

Bernie Jones

February 9, 2012

Dr. Nancy Desautels-Wiley

March 8, 2012

Dr. Nancy Desautels-Wiley

April 12, 2012

Dr. Jill Gardner

2011 PCAS BOARD MEMBERS AND COMMITTEE CONTACTS

<u>Office</u>	<u>Name</u>	<u>Email</u>	<u>Phone</u>
*President	Scott Findlay	president@pcas.org	714-342-2534
*Vice-President	Steve O'Neil	vicepresident@pcas.org	949-548-7934
*Secretary	Megan Galway	secretary@pcas.org	714-539-6354
*Treasurer	Bob Brace	treasurer@pcas.org	714-544-6282
*Historian/Librarian/Archivist	Jane Gothold	librarian-archivist@pcas.org	562-947-6506
*Programs	Joe Hodulik	programs@pcas.org	949-300-1864
*Quarterly Co-editor	Henry Koerper	publications@pcas.org	714-633-9287
*Voting member	Kathleen Shada	kshada@pcas.org	714-381-8182
*Voting member	Ivan Strudwick	istrudwick@pcas.org	949-553-0666
Curator	Mark Roeder	curator@pcas.org	714-299-4150
Donation-Awards Coordinator	Joe Hodulik	donation-awards@pcas.org	949-300-1864
Field Trips	Scott Findlay	fieldtrips@pcas.org	714-342-2534
Membership	Megan Galway	membership@pcas.org	714-539-6354
Native American Liaison	Steve O'Neil	nativeamericanliaison@pcas.org	949-548-7934
Newsletter Editor	Sherri Gust	newsletter@pcas.org	714-245-0264
Publicist	Joe Hodulik	publicity@pcas.org	949-300-1864
Quarterly Co-editor	Sherri Gust	publications@pcas.org	714-245-0264
Refreshments	Gail Cochlin	refreshments@pcas.org	714-997-0852
Scholarship	Megan Galway	scholarship@pcas.org	714-539-6354
Website	Rene Brace	info@pcas.org	714-544-6282

*Denotes PCAS Board Member

PACIFIC COAST ARCHAEOLOGICAL SOCIETY

2011 Calendar Year Membership and Subscription Form

Name(s): _____

Address: _____

City: _____ State: _____ Zip Code _____

Phone: _____ Email: _____

Yes, I would like to receive my Newsletter by email. Please be sure email above is legible.

I have read and agree to abide by the PCAS Code of Ethics _____

Signature

Membership (Includes Quarterly/Newsletter)

- Active Member - \$45
- Family Membership - \$50
- Supporting Member* - \$55
- Donor Member* - \$75
- Lifetime Member* - \$1000

* May be individual or family membership

Subscription Only

- Quarterly* - \$37
- Newsletter* - \$18
- Student Associate - \$10 (email Newsletter only)

Scholarship Fund

- Donation \$ _____

Return form with payment to:

PCAS Membership
PO Box 10926
Costa Mesa, CA 92627-0926

www.pcas.org